

Oral health research priorities: results of a priority setting partnership



Peter Robinson, Shamaila Anwar, Richard Boards, Di Charles, Jan Clarkson, Katherine Cowan, Blanaid Daly, Peter Delaney, Onkar Dhanoya, Chris Deery, Anne-Marie Glenny, Jenny Godson, Sara Hurley, Yin-Ling Lin, Rosie McEachan, Ian Mills, Rebecca Moazzez, Emma Pacey, Sue Pavitt.

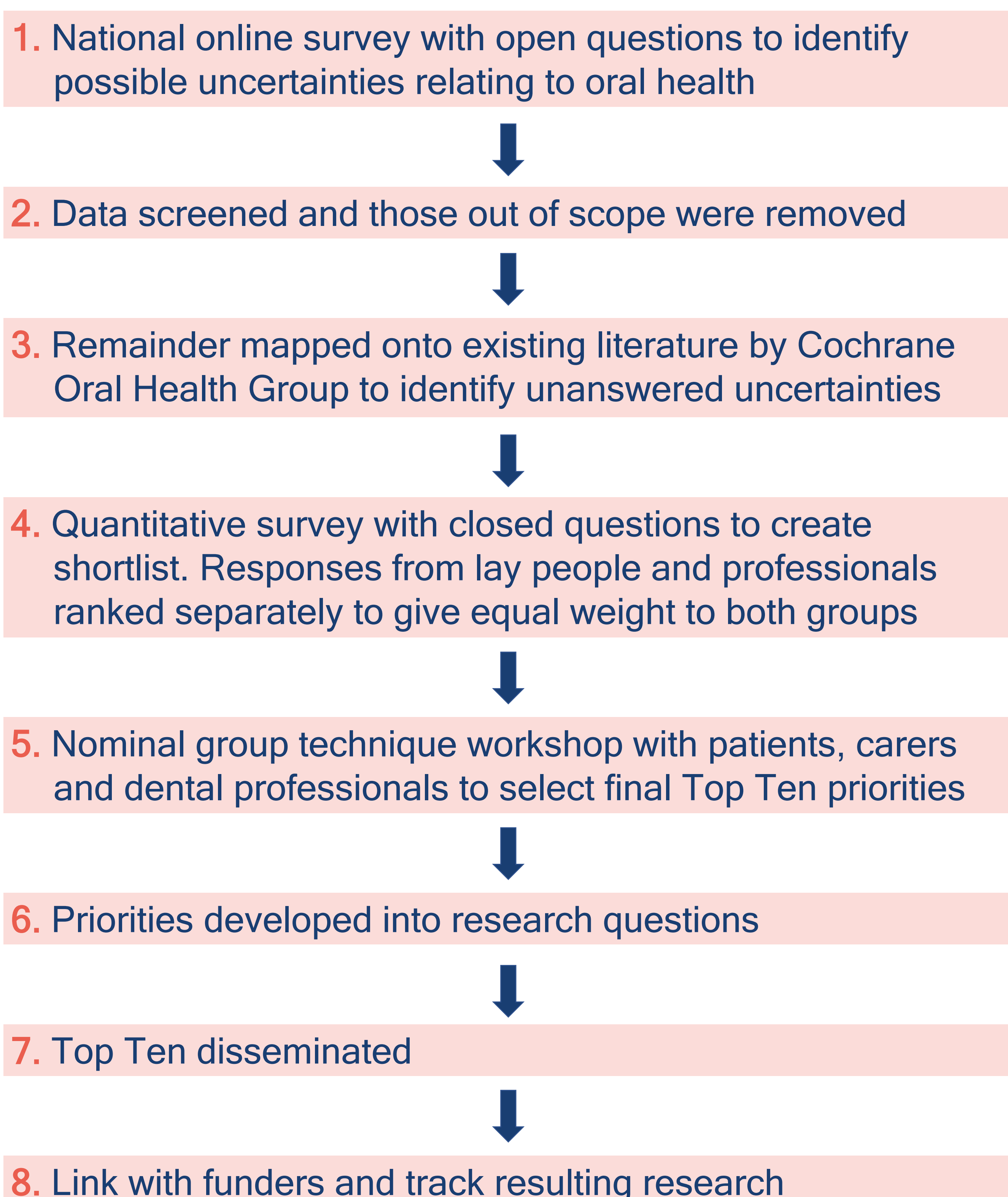
Background

- Despite considerable improvements, oral health remains a major public health problem. There are many uncertainties about the effectiveness of prevention & treatment.
- Not enough evidence about what works:
 - In and outside the surgery
 - To manage NHS dentistry
- We aimed to bring lay people & dental care professionals together in a priority setting partnership to identify the most important research questions about interventions to improve oral health &/or reduce inequalities.

Oral & Dental Health James Lind Alliance Priority Setting Partnership

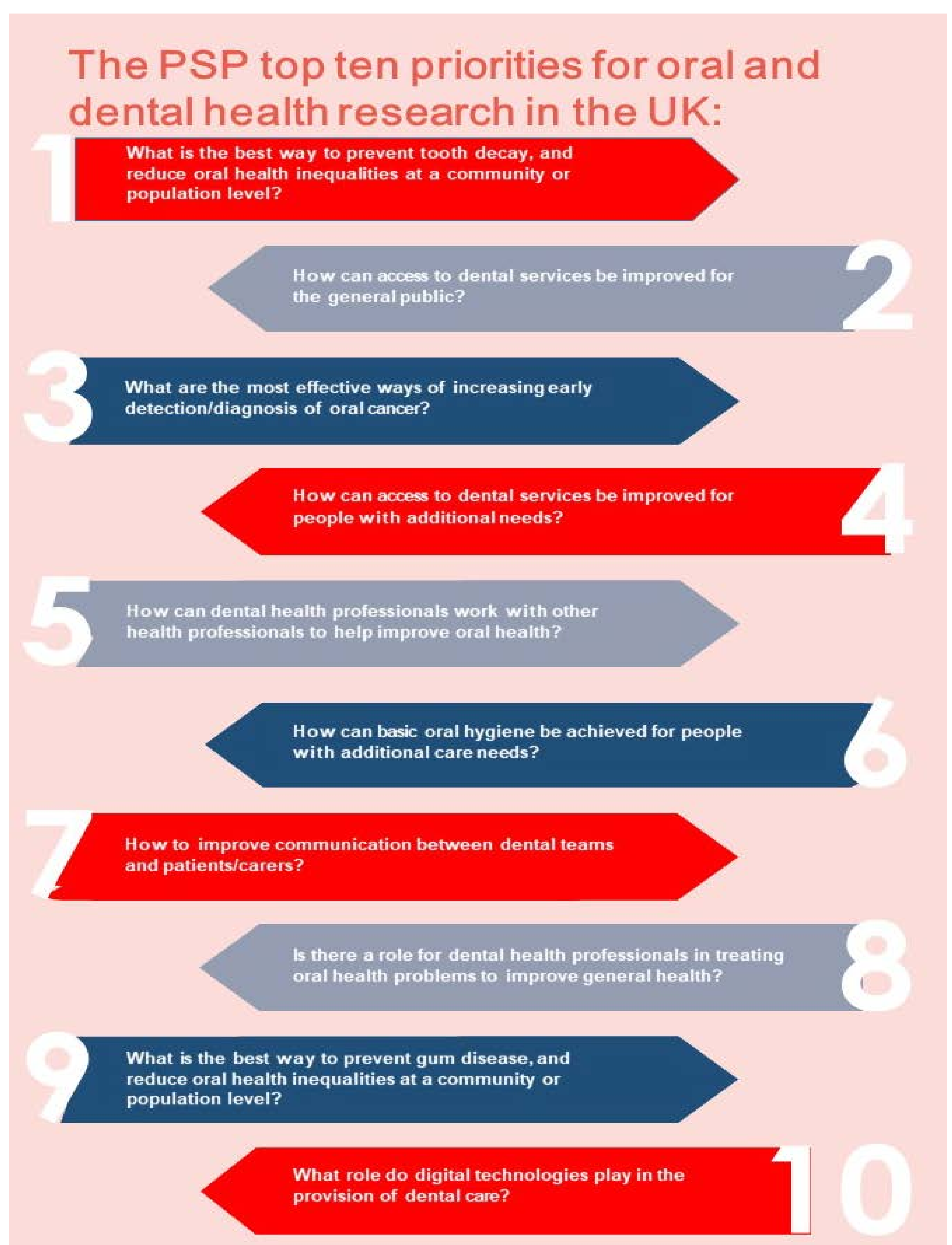
- Identify & prioritise unanswered questions - 'uncertainties'
- About effects of most important treatments
- Ensure research funders know what matters to patients & clinicians
- Co-production - Lay people [patients, public & carers] & clinicians working together
- Patient public Involvement - achieved Reach, Equality and Diversity

Method



Results

1. 607 people suggested over 1,100 possible uncertainties in the initial survey.
- 2 & 3. Screening and literature mapping reduced this to a long list of 38 unanswered questions.
4. 1,402 lay people and professionals voted to shortlist the 25 most important questions. Some overlap between lay and professional priorities
5. 28 lay people & dental professionals agreed the Top Ten most important questions to address
6. Priorities developed into research questions
7. Top Ten disseminated to research funders in the UK



Discussion

- For the first time, patients, public, carers, other lay people & dental professionals have worked together to identify the most pressing research questions to improve oral & dental health for individual patients, for special groups & the whole population
- Primary care & public health emphasis of questions reflects priorities of lay people & supports inclusive approach
- Top Ten has been disseminated to funders & already used as a criterion in a recent NIHR Efficacy & Mechanism Evaluation call