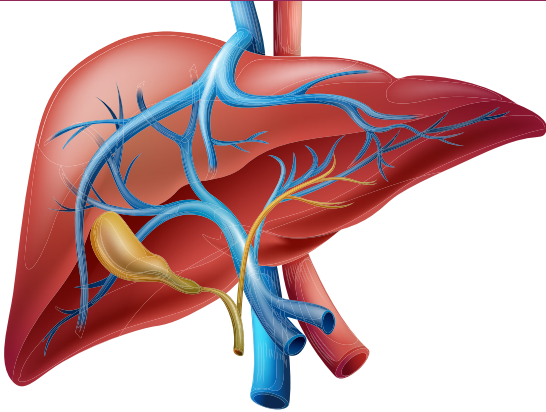


# LIVER CIRRHOSIS RESEARCH

**Calling all people living or working with liver disease - we need your help!**



**What do you think are the most important questions for liver cirrhosis research?**

**Scan the code to complete a 10 minute survey:**



Cases of liver disease are increasing in the UK and although a lot of research is being done, we have not developed a new treatment for liver cirrhosis in the last 20 years.

*Thank you for making a difference!*



**James  
Lind  
Alliance**

Priority Setting Partnerships



**UKCLIF**

UK CHRONIC LIVER FAILURE NETWORK

**BRITISH  
LIVER  
TRUST**

<https://www.jla.nihr.ac.uk/priority-setting-partnerships/liver-cirrhosis/>